

**AGENDA NOTE
FOR
THE 25TH MEETING OF THE STATE ADVISORY COMMITTEE**

Date	10.07.2018 (Tuesday)
Time	11:30 AM
Venue	Conference Room, Office of the Gujarat Electricity Regulatory Commission, 6 th Floor, GIFT ONE, Road 5-C, GIFT City, Gandhinagar 382355, Gujarat India. Followed by Lunch at Fortune Inn Haveli, Sector-11, Gandhinagar

ITEM NO.	NOTES ON AGENDA
1.	Introduction of the Members of reconstituted State Advisory Committee
2.	Approval of the minutes of the 24 th Meeting of the State Advisory Committee held on 31 st August, 2017
3.	Action Taken Report on the minutes of the 24 th Meeting of the State Advisory Committee
4.	Important Activities carried out by the Commission during the year 2017-18
5.	Standard of Performance of Distribution Utilities for the year 2017-18
6.	Issues of the Members of the Committee
7.	Any other Item with the permission of Chair

Agenda Item No. 1: Introduction of the Members of reconstituted State Advisory Committee

State Advisory Committee has been reconstituted by the Commission vide Notification dated 23.04.2018 in exercise of powers conferred under Section 87 of the Electricity Act. Functions of the Committee are depicted under Section 87 of the Electricity Act, 2003. As, the Committee is meeting for the first time after reconstitution, Agenda can be started with introduction of the appointed members of the State Advisory Committee.

Agenda item No. 2: Approval of the minutes of the 24th Meeting of the State Advisory Committee held on 31st August, 2017

GERC vide its letter no GERC/TECH/24th SAC/MoM/2017/1738 dated 03.10.2017 circulated minutes of the 24th Meeting of the State Advisory Committee held on 31st August, 2017 at Conference Room, Office of the Commission, GIFT ONE, GIFFT City, Gandhinagar. Since, no comments have been received from the members, Minutes of the 24th Meeting may be treated as approved.

Agenda Item No. 3

Action Taken Report on the minutes of the 24th Meeting of the State Advisory Committee:

- 3.1 Agenda Item No. 2, Issue 1:** Based on representation of members of SAC representing agriculture consumers that distribution utilities should take keen interests and see that maximum number of crop compensation claims are settled in farmers' favour and it is duty of the distribution licensees to see maximum crop insurances claims are settled favourably, distribution utilities were directed to look into the matter.

Action Taken Report of Distribution Utilities:

MGVCL has furnished details of crop compensation status for last three years and as on 02.04.2018 annexed herewith as Annexure I. During the policy period of 2017-18 i.e. 03.04.2017 to 02.04.2018, total 8 claims were registered and out of these cases 7 claims were in farmers' favour and one case was rejected as the claim was not eligible under risk covered.

DGVCL has prepared pamphlets printed in simple Gujarati language and distributed amongst farmers along with their electricity bills to educate them for claim filling procedure. Head Offices and sub-division offices have been instructed to take necessary actions immediately with required documents and submit the documents to the insurance office in time so that maximum crop insurance claims be settled in goodwill of farmers. Field officers have been sensitised to follow up to settle maximum claims. Further, Insurance Company has been informed to clear the pendency during the meeting held in the month of October, 2017. Status of crop compensation as on 18.04.2018 is furnished herewith annexed as Annexure I.

PGVCL has furnished details of crop compensation status as on March 2018 annexed herewith as Annexure I.

UGVCL has furnished details of crop compensation status as on March 2018 annexed herewith as Annexure I.

3.2 Agenda item No. 2, Issue 2: Chief Electrical Inspector was directed to verify the works of maintenance done by licensees on sample basis, in

order to minimize the accidents and report to the Commission in next meeting.

Action Taken Report of CEI:

CEI submitted that a meeting was held on 22nd November, 2017 at the office of the Chief Electrical Inspector, Gandhinagar to discuss the issues with respect to meeting of the State Advisory Committee held on 31st August, 2017. During the meeting, the methodology of maintenance work of electrical installations of all distribution companies were explained by the representatives of DISCOMs. Maintenance works of HT and LT overhead lines (feeder wise) along with their associated equipments is carried out by each sub-division office and maintenance work of transformers is carried out by division offices. DISCOMs were directed to maintain the records of maintenance works at sub-division office level and keep such records readily available during visit of representatives of the inspectorate. Further, DISCOMs were informed that maintenance works of each sub-division will be checked on sample checking basis by the concerned Electrical Sub Inspector (ESI)/ Jr. Assistant Electrical Inspector (Jr. AEI) of the inspectorate. The rectification work carried out by DISCOMs on electrical installations will be verified jointly with Junior Engineers of DISCOMs once in a week. The earthing systems of consumers as well as distribution transformers will be verified and tested during the site visit. The format for the inspection report of joint visit will be provided by the inspectorate. These reports will be submitted to the Commission before the meeting.

3.3 Agenda item No. 2, issue 3: Chief Electrical Inspector was directed to carry out sample checks for the effective earthing at consumers' premises

as well as in the Distribution System and submit the report quarterly to the Commission.

Action Taken Report of CEI:

The issue is covered in Action Take submitted for Agenda Item No. 2.2 above.

3.4 Agenda item No. 2, Issue 13: Energy and Petrochemical Department was advised to take up the matter of levy of property tax / rent on electricity network in TPL's license areas with respective department on priority basis and resolve the issue expeditiously, emphasizing there should not be any discrimination about applicability of government rules amongst consumers of State owned DISCOMs and Torrent Power Limited.

Action Taken Report of TPL and EPD:

Energy and Petrochemical Department, Government of Gujarat has stated based on the representation from TPL and earlier directions of the Commission, the proposal of EPD for obtaining the Government's approval is under process and further feedback would be sent as and when the final decision is taken.

3.5 Agenda Item No. 3, Issue 3: Estimate for new HT connection on per kVA basis.

Torrent Power Limited was directed to submit the study report on implementation of recovery of per kW charge for new HT connections having contract demand less than 1 MW, within 4-week time.

Action Taken Report of TPL:

Action Taken Report from TPL is awaited.

3.6 Agenda Item No.3, Issue 12: Western Railway was directed to expedite the pending formalities in reference to information provided by SLDC during 23th Meeting of SAC regarding status of Railways. It was further directed to Western Railways that the member nominated for SAC shall attend the meeting in future.

Action Taken Report of Western Railway:

Action Taken Report from Western Railway is awaited.

3.7 Agenda Item No. 3, Issue 13: On directives of the Commission regarding taking up issue of pending work of GETCO for Railway Crossing, a senior representative familiar with the issue was called during the 19th Meeting of the Co-ordination Forum held on 14th November, 2017 at Conference Room, DGVCL, Surat where issue was discussed. Western Railway was directed for speedy clearance of pending applications of railway crossing within 15 days and to work with utilities for development of electricity sector in the State of Gujarat, and if not done so, GETCO was asked to file a petition in this regard before the Commission.

Action Taken Report of Western Railway:

Action Taken Report from Western Railway is awaited.

3.8 Agenda Item No. 3, Issue 3 (iii): CEI and distribution licensees were directed to review the existing design of structure along with CTPT Units and Distribution Transformer.

Action taken Report of DISCOMs and CEI:

MGVCL submitted that the possibility of compact design for installation of CTPT unit, transformer with DP structure as against prevailing design to resolve the problem of space constraint, CPR & D cell of GUVNL has prepared draft technical specification for outdoor HT metering cubical with LBS/VCB and suggestion was sent by MGVCL. Further, suggestion to increase limit of LT category from 100 kVA to 150 kVA was taken up for discussion during 18th Meeting of Electricity Supply Code Review Panel held on 25.09.2017 at the Office of the Commission.

PGVCL submitted that over a period of time dimension of distribution transformer has reduced considerably because of better coolant etc. PGVCL is in process of re-designing the construction standard for distribution transformer centre considering the other technical and safety parameters. Also, in line with the distribution transformer centre, the construction standard for mounting CTPT unit shall be reviewed.

DGVCL submitted that in case of existing or new connection, possibility of compact design is related with revenue from HT consumers and hence common specifications for all four State Owned DISCOMs is required and accordingly, a compact CTPT unit for all four State Owned DISCOMs can be think of. However, remaining portion of HT connection is part of consumer's side and it can be allowed to installed with compact design as well as indoor installation where it is approved by CEI. Further,

increase in limit of LT category from 100 kVA to 150 kVA can be thought of.

UGVCL submitted that the matter is referred to R & D department of GUVNL for further course of action.

CEI submitted that in the meeting held on 22nd November, 2017 at the office of the CEI to discuss the issues as directed by the Commission with respect to meeting of SAC held on 31st August, 2017, as stated above, it was informed by UGVCL that the work of compact design of CTPT and DP structure has been allotted to Research and Development team of GUVNL and it is under progress. It was suggested by TPL that cast resin CT is safe and compact in size and would be useful in preparation of compact design of CTPT unit. CEI directed UGVCL to coordinate with the officer of R & D department to discuss safety aspects and to explore newly compacting CTPT and DP structure.

3.9 Agenda Item No. 3, Issue 3 (iv): On issue raised about proper attention not being given to industrial feeder for maintenance activities and distribution licensees to adopt uniform policy for feeder bifurcation with specified Ampere limit, all DISCOMs were directed to identify such industrial feeders and submit action plan within four-weeks' time.

Action taken Report of DISCOMs:

MGVCL submitted that uniform policy has been adopted for feeder bifurcation by considering the specified criteria and guidelines annexed herewith as Annexure II and the same have been circulated vide letter dated 16.09.2004. There are total 71 feeders where action is required for

feeder bifurcation. Out of the 71 feeders, 14 feeders are of HT express already bifurcated and therefore no action is required for these feeders. For remaining 57 feeders, the year-wise planning has been taken up for feeder bifurcation as detailed in Annexure II.

PGVCL submitted that maintenance activities are planned well in advance and accordingly carried out by field officer. Further, for bifurcation of industrial feeders, approval for new industrial connection is granted after ascertaining technical feasibility of feeder in all respects, therefore, there would not be any issue of over loading, however, if any consume consumes power exceeding its contract demand, it will create conditions of overloading and therefore, consumer should not draw power in excess of its contract demand to avoid such incidences of over loading. Further, bifurcation of feeder is carried out considering norms specified under the relevant regulations of the Commission or on exceeding allowable Ampere limit of the conductor of respective feeder.

DGVCL submitted that regular pre-monsoon and post-monsoon maintenance activities are carried out on industrial category feeders and mass maintenance is also carried out on industrial category feeders. Further, 20 industrial feeders are identified for bifurcation having loading of more than 150 Amp. Out of 20, 7 feeders are already bifurcated and work is under progress for bifurcation of remaining feeders. Moreover, it is decided to bifurcate feeders of all categories having ampere loading of more than 150 Amp and in rural sector having length of feeder of 30 Km or more or having % HTVR of more than 9%.

UGVCL submitted that uniform policy for feeder bifurcation is already decided vide letter dated 16.02.2017 (annexed herewith as Annexure II). Feeder bifurcation is carried out for 6 feeders during FY 2016-17. Further, maintenance activity is carried out for 243 industrial feeders are out 348 industrial feeders during FY 2017-18.

3.10 Agenda Item No. 3, Issue 5: For the suggestion of installation of Numerical relay with a feature of detecting broken conductor condition to avoid unwarranted situation and to minimize the electrical accidents, GETCO was advised to give priority to rural feeders for retrofitting of such relays so as to minimize electrical accidents and also submit the planning for retrofitting of rest of the panel at old sub-stations.

Action taken Report of GETCO:

GETCO submitted that it has considered 1906 number of 11 kV feeders to be retrofitted/ installed with broken conductor detection feature in FY 2017-18. Summary of such feeders is annexed herewith as Annexure III. Further, GETCO has identified 12743 relays for 11 kV and 22 kV feeder panel for retrofitting/ installing with broken conductor detection feature. Phase-wise planning for retrofitting/ installation is annexed herewith as Annexure III.

Agenda Item No. 4: Important Activities carried out by the Commission during the year 2017-18

During the year 2017-18, following important activities were carried out by the Commission;

- Truing up of FY 2016-17 and Determination of Tariff for FY 2018-19 has been carried out during FY 2017-18. Highlights of Tariff Orders are as under;
- GSECL has decommissioned Gandhinagar 1 & 2 units and Utran Gas based stations during FY 2016-17. bGSECL also decommissioned Ukai 1 & 2 and Sikka 1 & 2 units effective from 1st April, 2017. Generation Tariff for Ukai 3-5 stations reduced from Rs. 2.86 per kWh to Rs. 2.77 for FY 2018-19 due to efficiency improvement.
- The Commission determined transmission charges of Rs. 4207.17 / MW/Day for FY 2018-19 against Rs.4274.79 /MW/Day projected by GETCO. The Commission approved transmission charges for short-term collective transactions at 36.92 Ps./kWh based on the proportionate energy input in transmission system.
- The Commission approved SLDC charges of Rs. 927 Lakh for FY 2018-19 as against Rs. 3236 Lakh for FY 2017-18.
- Meter Rent is abolished effective from 1st April, 2018.
- Special tariff category introduced for exclusive use of electricity by Electric Vehicle Charging Stations
- Applicability and Criteria of LTMD tariff category is modified so as to enable small consumers to opt for demand based tariff
- To save ground water and reduce use of it by individual farmer for irrigation and to encourage irrigation from surface water on co-operative basis by group of farmers (Piyat Mandalies) - Fixed Charges applicable to 'Lift Irrigation' tariff categories reduced by 50%.
- Total distribution losses of 13.82% is allowed for FY 2018-19.
- The Commission directed Discoms to implement promotional scheme for installation of Solar Pump by farmers, study for quantifying appropriate

incentive for use of electricity at EHV level, economise short term power procurement through advance planning and submit action plan for introducing 'Demand Response' measures.

- During the year 2017-18, the Commission has come out with Gujarat Electricity Regulatory Commission (Net Metering Rooftop Solar PV Grid Interactive Systems) (First Amendment) Regulations, 2017 regarding maximum Rooftop Solar PV System capacity to be installed at any eligible consumer's premises except residential consumers, taking reference of amendment in Solar Policy notified by Government of Gujarat vide GR dated 13.04.2017.
- Further, the Commission has also come out with amendment in GERC (Procurement of Energy from Renewable Sources) (Second Amendment) Regulations, 2018 where RPO trajectory for FY 2017-18 to FY 2021-22 has been determined.
- The Commission has floated Draft GERC (MYT) (Second Amendment) Regulations, 2018 based on the representations of various Stakeholders and GETCO regarding uniform Short-Term Transmission Charges for all types of Short-Term transactions. Last date for submitting the comments / suggestions was 27th May, 2018 and hearing on the objections/ suggestions will be held in due course.
- The Commission has also notified Third Amendment in the Gujarat Electricity Distribution Code, based on the recommendations of the Distribution Code Review Panel.

Agenda Item No. 5: Standard of Performance of Distribution Utilities for FY 2017-18

Distribution Utilities have submitted Standard of Performance Reports for FY 2017-18 in accordance with the Gujarat Electricity Regulatory Commission (Standard of Performance of Distribution Licensee) Regulations, 2005, which is annexed herewith as Annexure IV.

Agenda Item No. 6

Issues of the Members of the Committee.

Agenda Item No. 7

Any other Item with the permission of Chair.

Sd/-
(Roopwant Singh, IAS)
Secretary
Gujarat Electricity Regulatory Commission
Gandhinagar

ANNEXURE I**Crop insurance compensation status****MGVCL (Last three years and as on 02.04.2018)****Policy taken from Oriental Insurance Company Limited**

Year	Assured (Rs. Lakhs)	Total annual premium paid (Rs. Lakhs)	No. of cases registered	Estimated loss amount (Rs. Lakhs)	No. of cases settled and compensation paid	Compensation paid to settled cases (Rs. Lakhs)	No. of cases pending	No. of cases rejected	Max. coverage/ incident (Rs. Lakh)	No. of cases in which compensation found more than maximum limit
2014-15	40.00	2.53	15	40.04	11	11.23	0	4	2.00	4
2015-16	100.00	25.84	13	16.39	5	2.40	0	8	2.00	0
2016-17	100.00	16.03	13	13.18	8	2.05	0	5	2.00	0
2017-18 (up to 02.04.2018)	100.00	8.05	8	13.47	7	5.00	0	1	2.00	2
Total	100.00	52.45	49	83.08	31	20.68	0	10	2.00	6

DGVCL (As on September, 2017)

Insurance Company- (1) the Oriental Insurance Company Ltd. from 31.07.2014 to 30.07.2015 (2) New India Assurance Co. Ltd. (31.07.2015 to 30.09.2018)

Year	Total annual premium paid by DGVCL (Rs. Lakh)	No. of cases registered	Estimated loss (Rs. Lakh)	No. of cases settled and compensation paid	Compensation paid to settled cases (Rs. Lakh)	No. of cases pending for compensation settlement	No. of cases rejected
2014-15	2.52	80	130.84	0	0.00	0	80
2015-16	10.26	150	154.43	8	7.20	3	139
2016-17	8.62	80	88.96	2	1.92	38	40
2017-18 (up to 18.04.2018)	9.73	124	70.88	0	0.00	47	77
Total		440	451.10	12	10.50	54	374

PGVCL

FY 2017-18

Sum insured (Rs. Lakhs)	Total annual premium paid (Rs. Lakhs)	No. of cases registered	Estimated loss amount (Rs. Lakhs)	No. of cases settled and compensation paid	Compensation paid to settled cases (Rs. Lakhs)	No. of cases pending	No. of cases rejected
100.00	28.32	70	55.09	29	13.31	32	9

UGVCL (up to 31.03.2018)

Sr. No.	Particular	Year				2017-18 (up to 05.02.2018)	2017-18 (06.02.2018 to 31.03.2018)
		2014-15	2015-16	2016-17	2017-18		
	Insurance Company	The Oriental Insurance Co. Ltd.				The United India Insurance Company Ltd.	
1	Sum assured (Rs. Lakh)	75.00	75.00	75.00	75.00	50.00	
2	Maximum coverage per incident (Rs. Lakh)	4.00	4.00	4.00	4.00	2.00	
3	Annual premium paid (Rs. Lakh)	8.15	8.15	8.15	12.08	5.90	
4	No. of cases registered	24	76	54	20	60	
5	Estimated loss (Rs. Lakh)	29.43	20.67	14.10	9.06	40.00	
6	No. of cases settled	20	64	40	17		
7	Compensation paid to settled cases (Rs. Lakh)	3.82	11.96	7.58	3.26		
8	Maximum compensation paid in one case (Rs. Lakh)	0.55	0.79	0.65	0.49		
9	No. of cases pending	0	0	2	3	58	
10	No. of cases rejected	4	12	12	1	2	

Criteria and guidelines for feeder bifurcation**MGVCL**

- Revised maximum Amp. Loading on 11 Kv/ 22 Kv feeders for LT/HT connections;

Sr. No.	Name of conductor	Maximum allowable peak load in Amps.	% VR
1	Rabit (50 mm ²)	150 Amps.	9%
2	Dog (100 mm ²)	250 Amps.	9%

If any 11 Kv/ 22 Kv feeders exceed the maximum permissible limit as above, the strengthening of conductor i.e. from Rabbit to Dog/ Bifurcation of feeder should be proposed.

Year wise planning for feeder bifurcation of remaining 57 feeders.

Year	Action required for number of feeders	No. of feeders having Amps. Loading of more than 150 Amp. and more than 9% VR and more than 30 km length	No. of feeders having more than 150 Amp. Loading and more than 9% VR	No. of feeders having more than 150 Amp. Loading and having more than 30 km. length	Sub total
2017-18	57	10	14	5	29
2018-19		4	18* (Industrial 2 No.)	6	28

Two number of industrial feeders are having more than 150 Amp. loading. (i) 11 kV Shiva feeder having load of 190 Amp. 66 kV Luna sub-station is sanctioned and maintenance work is completed. (ii) 11 kV Eureka feeder, having 231 Amp. loading, has existing partial Dog conductor And maintenance work is completed by January, 2018 and premonsoon maintenance work is being started by the field office. .

Criteria and guidelines for feeder bifurcation

UGVCL

Maximum allowable peak loading limit and % HTVR

Sr. No.	Name of conductor	Maximum allowable peak load in Amps.	% VR
1	Rabit (50 mm ²)	150 Amps.	9%
2	Dog (100 mm ²)	250 Amps.	9%

- To safeguard the system and to provide quality power supply, it is necessary that action for the bifurcation of any Ag/Ind./Urban/JGY feeder should be initiated before the parameters of Amp. loading and/or % HTVR reaches standard specified limit.
- The bifurcation proposal should be initiated immediately if the feeder load reaches more than 80% of loading capacity and there is expected sufficient load growth in near future on 11 kV feeder and/or % HTVR is 8%.
- Possibility of diverting the part load after erecting link line on the nearby feeder of same sub-station or nearby sub-station be checked to bring parameter within limit. If there is no possibility to divert part load as above then the proposal should be framed for the bifurcation such that after bifurcation, both the proposed and modified feeder parameters come within limit.
- If JGY feeder length is more than 30 KMs. (Main + Tap) and/or more than 10 No. of villages are connected on JGY feeder then the bifurcation proposal can be initiated even if all technical parameters are within limit but there are more interruption and time taken in attending fault is more.

ANNEXURE III

Details of feeders considered to be retrofitted/ installed with broken conductor detection feature in FY 2017-18;

Sr. No.	Phase/Year	Type of Feeders	Quantity	
			Relay Nominal Current- 5 A	Relay Nominal Current – 1 A
1	2017-18	AG	838	0
2		JGY/Rural	369	4
3		Town	4	0
4		Urban/City	213	5
5		Express	120	2
6		Industrial/GIDC	219	5
7		Solar	1	0
8		Water Works	8	0
9		Spare	66	1
10		(Not yet commissioned) Relay will be commissioned with “Broken Conductor” detection feature	49	2
		Total	1887	19

Phase wise planning for retrofitting/ installation of 12743 nos. of relays for 11 kV and 22 kV feeder panels

Sr. No.	Phase/Year	Type of Feeders	Quantity (Nos.)		Total Quantity (Nos.)	Estimate Cost (Rs. Crore)
			Replay Nominal Current – 5A	Relay Nominal Current – 1A		
1	2018-19	JGY/Rural	2674	19	5000	10.24
2		AG	2280	27		
3	2019-20	AG	3948	0	5000	10.24
4		Water Works	103	1		
5		Solar	2	0		
6		Express	615	22		
7		Industrial/GIDC	210	99		
8	2020-21	Industrial/GIDC	1094	0	2743	5.62
9		Town	63	4		
10		Urban/City	1248	68		
11		Spare	182	0		
12		(Not yet commissioned) Relay will be commissioned with “Broken Conductor” feature	84	0		
		Total	12503	240	12743	26.10

SoP001:Fatal and Non-fatal accident report

Total nos. of accidents for last five years						
	YEAR	FY 13-14	2014-15	2015-16	2016-17	2017-18
Fatal Human(FH)	Quarter	Q1+Q2+Q 3+Q4	Q1+Q2+Q 3+Q4	Q1+Q2+Q 3+Q4	Q1+Q2+Q 3+Q4	Q1+Q2+Q 3+Q4
	PGVCL	106	97	102	102	98
	UGVCL	83	69	78	87	81
	MGVCL	30	29	20	44	45
	DGVCL	53	38	64	71	73
	TPL-A	33	40	37	39	39
	TPL-S	13	23	14	9	7
	TOTAL	318	296	315	352	343
Fatal Animal (FA)	Quarter	Q1+Q2+Q 3+Q4	Q1+Q2+Q 3+Q4	Q1+Q2+Q 3+Q4	Q1+Q2+Q 3+Q4	Q1+Q2+Q 3+Q4
	PGVCL	270	220	186	220	249
	UGVCL	88	73	81	84	88
	MGVCL	96	58	57	53	72
	DGVCL	83	65	75	89	72
	TPL-A	12	3	6	14	13
	TPL-S	0	0	3	0	0
	TOTAL	549	419	408	460	494
Non Fatal Human (NFH)	Quarter	Q1+Q2+Q 3+Q4	Q1+Q2+Q 3+Q4	Q1+Q2+Q 3+Q4	Q1+Q2+Q 3+Q4	Q1+Q2+Q 3+Q4
	PGVCL	150	133	101	89	71
	UGVCL	39	34	43	34	35
	MGVCL	36	29	23	18	37
	DGVCL	127	62	77	88	69
	TPL-A	15	12	16	23	11
	TPL-S	4	9	2	4	3
	TOTAL	371	279	262	256	226
Total no. of accidents (FH+FA+NFH)	Quarter	Q1+Q2+Q 3+Q4	Q1+Q2+Q 3+Q4	Q1+Q2+Q 3+Q4	Q1+Q2+Q 3+Q4	Q1+Q2+Q 3+Q4
	PGVCL	526	450	389	411	418
	UGVCL	210	176	202	205	204
	MGVCL	162	116	100	115	154
	DGVCL	263	165	216	248	214
	TPL-A	60	55	59	76	63
	TPL-S	17	32	19	13	10
	TOTAL	1238	994	985	1068	1063

SoP001: Fatal and Non-fatal accident report

SoP001: Fatal and Non-fatal accident report												
	YEAR	2015-16			2016-17			2017-18			Compare w.r.t 2016-17	
		Dept.	O/s	Total	Dept.	O/s	Total	Dept.	O/s	Total	Dept.	O/s
Fatal Human(FH)	Quarter/Disc oms	Q1+Q2+Q3+Q4	Q1+Q2+Q3+Q4	Total	Q1+Q2+Q3+Q4	Q1+Q2+Q3+Q4	Total	Q1+Q2+Q3+Q4	Q1+Q2+Q3+Q4	Total	Q1+Q2+Q3+Q4	Q1+Q2+Q3+Q4
	PGVCL	7	95	102	3	99	102	6	92	98	3	-7
	UGVCL	3	75	78	4	83	87	5	76	81	1	-7
	MGVCL	0	20	20	1	43	44	3	42	45	2	-1
	DGVCL	3	61	64	4	67	71	5	68	73	1	1
	TPL-A	1	36	37	0	39	39	0	39	39	0	0
	TPL-S	0	14	14	1	8	9	0	7	7	-1	-1
	TOTAL	14	301	315	13	339	352	19	324	343	6	-15
	YEAR	2015-16			2016-17			2017-18			Compare w.r.t 2016-17	
		Quarter/Disc oms	Q1+Q2+Q3+Q4	Total	Q1+Q2+Q3+Q4	Total	Q1+Q2+Q3+Q4	Total	Q1+Q2+Q3+Q4	Total	Q1+Q2+Q3+Q4	
Fatal Animal(FA)	PGVCL		186	186		220	220		249	249		29
	UGVCL		81	81		84	84		88	88		4
	MGVCL		57	57		53	53		72	72		19
	DGVCL		75	75		89	89		72	72		-17
	TPL-A		6	6		14	14		13	13		-1
	TPL-S		3	3		0	0		0	0		0
	TOTAL		408	408		460	460		494	494		34
	YEAR	2015-16			2016-17			2017-18			Compare w.r.t 2016-17	
		Dept.	O/s	Total	Dept.	O/s	Total	Dept.	O/s	Total	Dept.	O/s
Non Fatal Human (NFH)	Quarter/Disc oms	Q1+Q2+Q3+Q4	Q1+Q2+Q3+Q4	Total	Q1+Q2+Q3+Q4	Q1+Q2+Q3+Q4	Total	Q1+Q2+Q3+Q4	Q1+Q2+Q3+Q4	Total	Q1+Q2+Q3+Q4	Q1+Q2+Q3+Q4
	PGVCL	35	66	101	26	63	89	24	47	71	-2	-16
	UGVCL	14	29	43	14	20	34	14	21	35	0	1
	MGVCL	11	12	23	7	11	18	17	20	37	10	9
	DGVCL	31	46	77	28	60	88	15	54	69	-13	-6
	TPL-A	1	15	16	3	20	23	0	11	11	-3	-9
	TPL-S	0	2	2	0	4	4	0	3	3	0	-1
	TOTAL	92	170	262	78	178	256	70	156	226	-8	-22
	YEAR	2015-16			2016-17			2017-18			Compare w.r.t 2016-17	
		Dept.	O/s	Total	Dept.	O/s	Total	Dept.	O/s	Total	Dept.	O/s
Total Nos. of Accidents (FH+FA+NFH)	Quarter/Disc oms	Q1+Q2+Q3+Q4	Q1+Q2+Q3+Q4	Total	Q1+Q2+Q3+Q4	Q1+Q2+Q3+Q4	Total	Q1+Q2+Q3+Q4	Q1+Q2+Q3+Q4	Total	Q1+Q2+Q3+Q4	Q1+Q2+Q3+Q4
	PGVCL	42	347	389	29	382	411	30	388	418	1	6
	UGVCL	17	185	202	18	187	205	19	185	204	1	-2
	MGVCL	11	89	100	8	107	115	20	134	154	12	27
	DGVCL	34	182	216	32	216	248	20	194	214	-12	-22
	TPL-A	2	57	59	3	73	76	0	63	63	-3	-10
	TPL-S	0	19	19	1	12	13	0	10	10	-1	-2
	TOTAL	106	879	985	91	977	1068	89	974	1063	-2	-3

FY 2017-18

PGVCL	Fatal Human(FH)	Fatal Animal (FA)	Non Fatal Human (NFH)	Total no. of accidents (FH+FA+NFH)
Q1	25	41	18	84
Q2	31	154	28	213
Q3	23	28	11	62
Q4	19	26	14	59
Total	98	249	71	418

UGVCL	Fatal Human(FH)	Fatal Animal (FA)	Non Fatal Human (NFH)	Total no. of accidents (FH+FA+NFH)
Q1	18	28	8	54
Q2	43	50	10	103
Q3	10	6	9	25
Q4	10	8	4	22
Total	81	92	31	204

MGVCL	Fatal Human(FH)	Fatal Animal (FA)	Non Fatal Human (NFH)	Total no. of accidents (FH+FA+NFH)
Q1	16	17	11	44
Q2	23	50	11	84
Q3	2	3	8	13
Q4	4	2	7	13
Total	45	72	37	154

DGVCL	Fatal Human(FH)	Fatal Animal (FA)	Non Fatal Human (NFH)	Total no. of accidents (FH+FA+NFH)
Q1	12	13	21	46
Q2	28	43	22	93
Q3	12	14	16	42
Q4	21	2	10	33
Total	73	72	69	214

TPL-A	Fatal Human(FH)	Fatal Animal (FA)	Non Fatal Human (NFH)	Total no. of accidents (FH+FA+NFH)
Q1	10	4	1	15
Q2	18	8	4	30
Q3	7	0	3	10
Q4	4	1	3	8
Total	39	13	11	63

TPL-S	Fatal Human(FH)	Fatal Animal (FA)	Non Fatal Human (NFH)	Total no. of accidents (FH+FA+NFH)
Q1	4	0	3	7
Q2	2	0	0	2
Q3	1	0	0	1
Q4	0	0	0	0
Total	7	0	3	10

Summary:

- Fatal Human (FH) accidents were increased during FY 2017-18 in MGVCCL & DGVCL as compared to FY 2016-17.
- Fatal Animal (FA) accidents were increased during FY 2017-18 in PGVCL by 29 accidents & MGVCCL by 19 accidents & UGVCL by 4 accidents as compared to FY 2016-17.
- Non-Fatal Human (NFH) accidents were increased during FY 2017-18 in MGVCCL by 19 accidents & UGVCL as compared to FY 2016-17.

In FY 2017-18 Total Nos. of accidents were decreased except PGVCL and MGVCCL compared to FY 2016-17.

SoP 003B: Register for compiling the complains classification wise

DISCOMs	Year	Qtr	Total Complaints received during the quarter	No. of complaints redressed within stipulated time during the quarter	% of Complain Redressed within stipulated during the quarter
PGVCL	2013-14	Q1	135001	132481	98.13%
		Q2	302064	296683	98.22%
		Q3	114700	111022	96.79%
		Q4	123060	121506	98.74%
	2014-15	Q1	239937	239455	99.80%
		Q2	130867	130021	99.35%
		Q3	112340	111611	99.35%
		Q4	123520	122510	99.18%
	2015-16	Q1	359304	358196	99.69%
		Q2	206669	206031	99.69%
		Q3	147763	147079	99.54%
		Q4	123831	123435	99.68%
	2016-17	Q1	144594	144080	99.64%
		Q2	201631	201004	99.69%
		Q3	147522	146763	99.49%
		Q4	127262	124258	97.64%
2017-18	Q1	168517	165599	98.27%	
	Q2	204173	200908	98.40%	
	Q3	171313	170292	99.40%	
	Q4	145351	143070	98.43%	

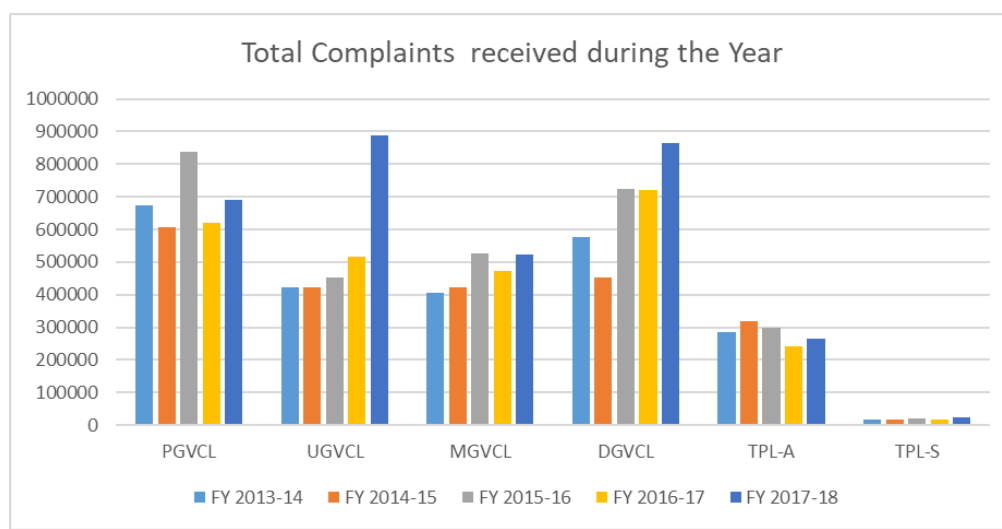
UGVCL	2013-14	Q1	88950	88983	100.04%
		Q2	50146	50146	100.00%
		Q3	196628	196618	99.99%
		Q4	85615	85615	100.00%
	2014-15	Q1	82642	79326	95.99%
		Q2	132271	130220	98.45%
		Q3	102996	102100	99.13%
		Q4	104749	104636	99.89%
	2015-16	Q1	117146	116851	99.75%
		Q2	149967	146408	97.63%
		Q3	120920	120483	99.64%
		Q4	63480	63453	99.96%
	2016-17	Q1	134222	133960	99.80%
		Q2	154036	149587	97.11%
		Q3	127527	127454	99.94%
		Q4	100079	99336	99.26%
2017-18	Q1	175117	172948	98.76%	
	Q2	250368	243911	97.42%	
	Q3	244098	244098	100.00%	
	Q4	218809	206884	94.55%	
2013-14	Q1	80586	80586	100.00%	
	Q2	142273	142273	100.00%	
	Q3	102782	102782	100.00%	
	Q4	81265	81265	100.00%	
2014-15	Q1	103040	103040	100.00%	
	Q2	149850	149850	100.00%	
	Q3	102817	102776	99.96%	
	Q4	99875	99875	100.00%	
2015-16	Q1	112594	112594	100.00%	
	Q2	273822	273822	100.00%	
	Q3	96040	96040	100.00%	
	Q4	45255	45255	100.00%	
2016-17	Q1	111031	111031	100.00%	
	Q2	150934	150934	100.00%	
	Q3	112120	112120	100.00%	
	Q4	99131	99131	100.00%	
2017-18	Q1	121411	121411	100.00%	
	Q2	176959	176959	100.00%	
	Q3	113636	113636	100.00%	
	Q4	111059	111059	100.00%	
MGVCL	2013-14	Q1	88950	88983	100.04%
		Q2	50146	50146	100.00%
		Q3	196628	196618	99.99%
		Q4	85615	85615	100.00%
	2014-15	Q1	82642	79326	95.99%
		Q2	132271	130220	98.45%
		Q3	102996	102100	99.13%
		Q4	104749	104636	99.89%
	2015-16	Q1	117146	116851	99.75%
		Q2	149967	146408	97.63%
		Q3	120920	120483	99.64%
		Q4	63480	63453	99.96%
	2016-17	Q1	134222	133960	99.80%
		Q2	154036	149587	97.11%
		Q3	127527	127454	99.94%
		Q4	100079	99336	99.26%
2017-18	Q1	175117	172948	98.76%	
	Q2	250368	243911	97.42%	
	Q3	244098	244098	100.00%	
	Q4	218809	206884	94.55%	
2013-14	Q1	80586	80586	100.00%	
	Q2	142273	142273	100.00%	
	Q3	102782	102782	100.00%	
	Q4	81265	81265	100.00%	
2014-15	Q1	103040	103040	100.00%	
	Q2	149850	149850	100.00%	
	Q3	102817	102776	99.96%	
	Q4	99875	99875	100.00%	
2015-16	Q1	112594	112594	100.00%	
	Q2	273822	273822	100.00%	
	Q3	96040	96040	100.00%	
	Q4	45255	45255	100.00%	
2016-17	Q1	111031	111031	100.00%	
	Q2	150934	150934	100.00%	
	Q3	112120	112120	100.00%	
	Q4	99131	99131	100.00%	
2017-18	Q1	121411	121411	100.00%	
	Q2	176959	176959	100.00%	
	Q3	113636	113636	100.00%	
	Q4	111059	111059	100.00%	

DGVCL	2013-14	Q1	155394	155394	100.00%
		Q2	180398	180398	100.00%
		Q3	146969	146969	100.00%
		Q4	93483	93483	100.00%
	2014-15	Q1	101913	101913	100.00%
		Q2	123504	122861	99.48%
		Q3	101542	101095	99.56%
		Q4	124716	124716	100.00%
	2015-16	Q1	165274	165274	100.00%
		Q2	214514	214514	100.00%
		Q3	170480	170480	100.00%
		Q4	172943	172943	100.00%
	2016-17	Q1	152493	152468	99.98%
		Q2	223615	222967	99.71%
		Q3	169591	169495	99.94%
		Q4	174129	174096	99.98%
2017-18	Q1	181772	181738	99.98%	
	Q2	289370	289285	99.97%	
	Q3	198641	198641	100.00%	
	Q4	195497	195418	99.96%	
2013-14	Q1	66742	66617	99.81%	
	Q2	100296	99436	99.14%	
	Q3	63947	63737	99.67%	
	Q4	53690	53629	99.89%	
2014-15	Q1	102283	102052	99.77%	
	Q2	101228	100687	99.47%	
	Q3	58526	58406	99.79%	
	Q4	55819	55686	99.76%	
2015-16	Q1	103771	103354	99.60%	
	Q2	88499	88082	99.53%	
	Q3	59398	59122	99.54%	
	Q4	46515	46146	99.21%	
2016-17	Q1	75382	75033	99.54%	
	Q2	70213	69709	99.28%	
	Q3	48641	48441	99.59%	
	Q4	47081	46959	99.74%	
2017-18	Q1	78838	78474	99.54%	
	Q2	92600	92100	99.46%	
	Q3	50043	49885	99.68%	
	Q4	42826	42632	99.55%	
TPL A	2013-14	Q1	155394	155394	100.00%
		Q2	180398	180398	100.00%
		Q3	146969	146969	100.00%
		Q4	93483	93483	100.00%
2014-15	Q1	101913	101913	100.00%	
	Q2	123504	122861	99.48%	
	Q3	101542	101095	99.56%	
	Q4	124716	124716	100.00%	
2015-16	Q1	165274	165274	100.00%	
	Q2	214514	214514	100.00%	
	Q3	170480	170480	100.00%	
	Q4	172943	172943	100.00%	
2016-17	Q1	152493	152468	99.98%	
	Q2	223615	222967	99.71%	
	Q3	169591	169495	99.94%	
	Q4	174129	174096	99.98%	
2017-18	Q1	181772	181738	99.98%	
	Q2	289370	289285	99.97%	
	Q3	198641	198641	100.00%	
	Q4	195497	195418	99.96%	

TPL S

2013-14	Q1	5409	5403	99.89%
	Q2	5759	5752	99.88%
	Q3	4400	4398	99.95%
	Q4	3324	3324	100.00%
2014-15	Q1	5558	5553	99.91%
	Q2	5705	5705	100.00%
	Q3	4281	4277	99.91%
	Q4	3475	3470	99.86%
2015-16	Q1	5979	5971	99.87%
	Q2	5033	5030	99.94%
	Q3	4419	4414	99.89%
	Q4	3991	3986	99.87%
2016-17	Q1	5922	5915	99.88%
	Q2	5512	5509	99.95%
	Q3	3691	3683	99.78%
	Q4	3764	3762	99.95%
2017-18	Q1	6662	6654	99.88%
	Q2	6661	6644	99.74%
	Q3	4867	4857	99.79%
	Q4	4547	4544	99.93%

Total Complaints received during the Year						
Discoms	PGVCL	UGVCL	MGVCL	DGVCL	TPL-A	TPL-S
FY 2013-14	674825	421339	406906	576244	284675	18892
FY 2014-15	606664	422658	421339	451675	317856	19019
FY 2015-16	837567	451513	527711	723211	298183	19422
FY 2016-17	621009	515864	473216	719828	241317	18889
FY 2017-18	689354	888392	523065	865280	264307	22737



Total Nos. of complained received during FY 2017-18.

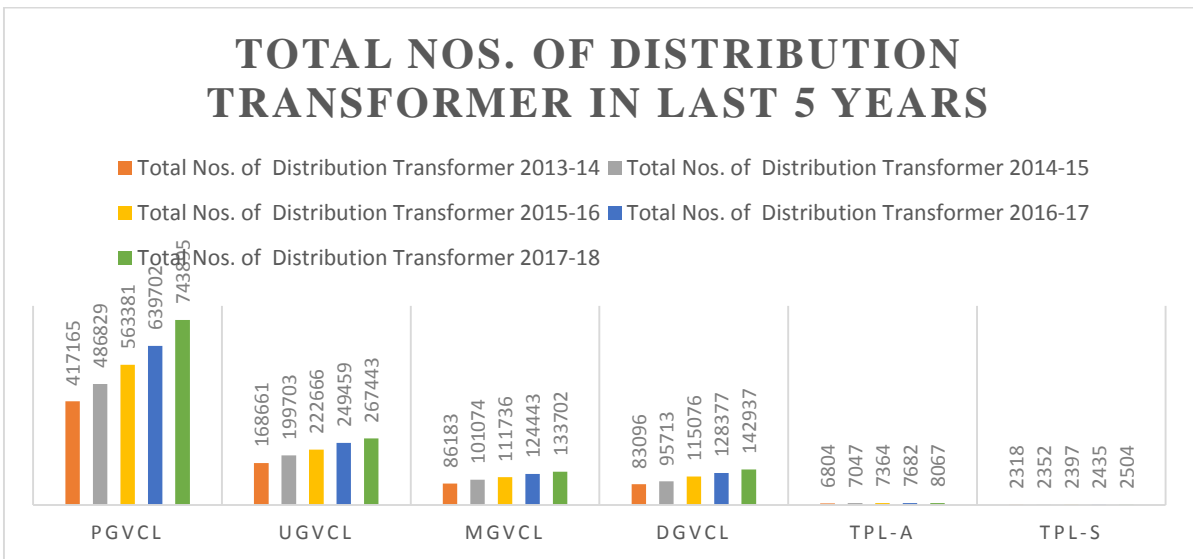
UGVCL>DGVCL>PGVCL>MGVCL>TPL-A>TPL-S

Nature of Majority of Complaints during FY 2017-18	
PGVCL	Loose Connection from Pole/ Fuse blown complains
	Interruption due to line breakdowns
	Stopped/defective meters
UGVCL	Loose Connection from Pole/ Fuse blown complains
	Interruption due to line breakdowns
	Stopped/defective meters
MGVCL	Loose Connection from Pole/ Fuse blown complains
	Interruption due to line breakdowns

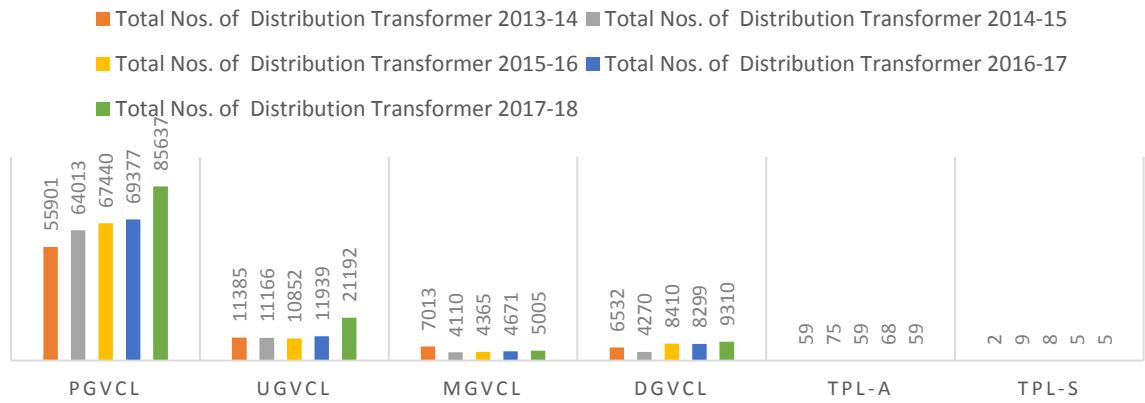
	Stopped/defective meters
DGVCL	Interruption due to line breakdowns
	Loose Connection from Pole/Fuse blown complains
	Stopped/defective meters
TPL-A	Interruption in power supply due to shutdown/line breakdown
	Interruption in power supply others
	Loose Connection from Pole/Fuse blown complains
TPL-S	Interruption due to line breakdowns
	Stopped/defective/Burnt meters
	Interruption in power supply others

Majority of Complaints are loose connection from pole/Fuse blown complaints.

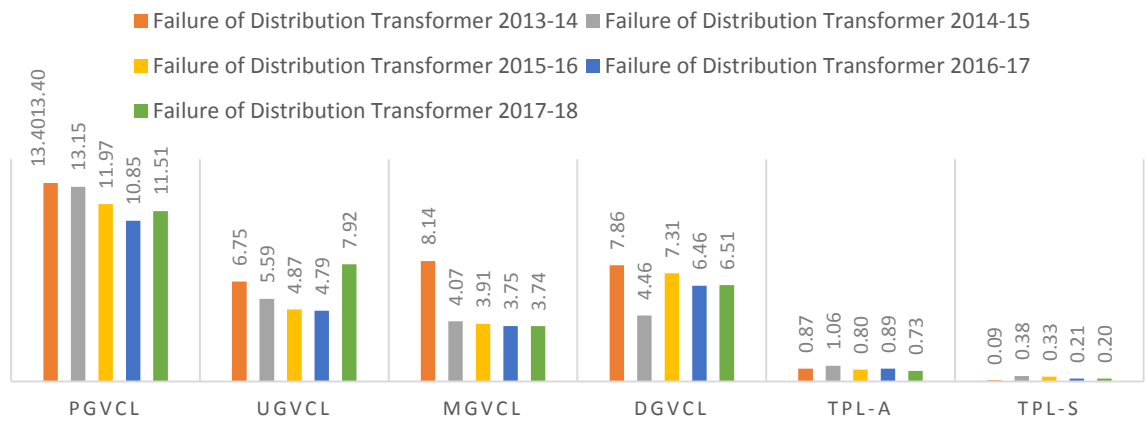
SoP006:Failure of Distribution Transformer



TOTAL NOS. OF FAILED DISTRIBUTION TRANSFORMER IN LAST 5 YEARS



% FAILURE RATE OF DISTRIBUTION TRANSFORMER IN LAST 5 YEARS



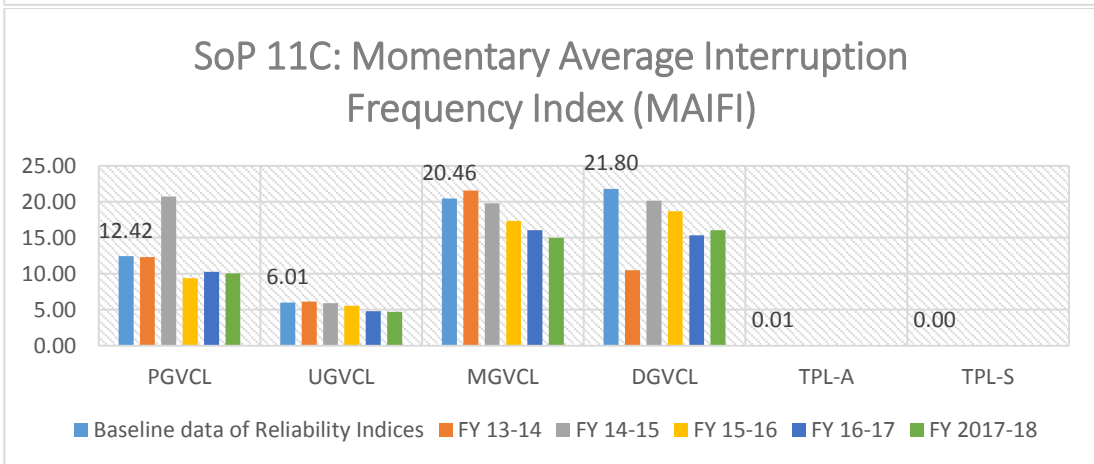
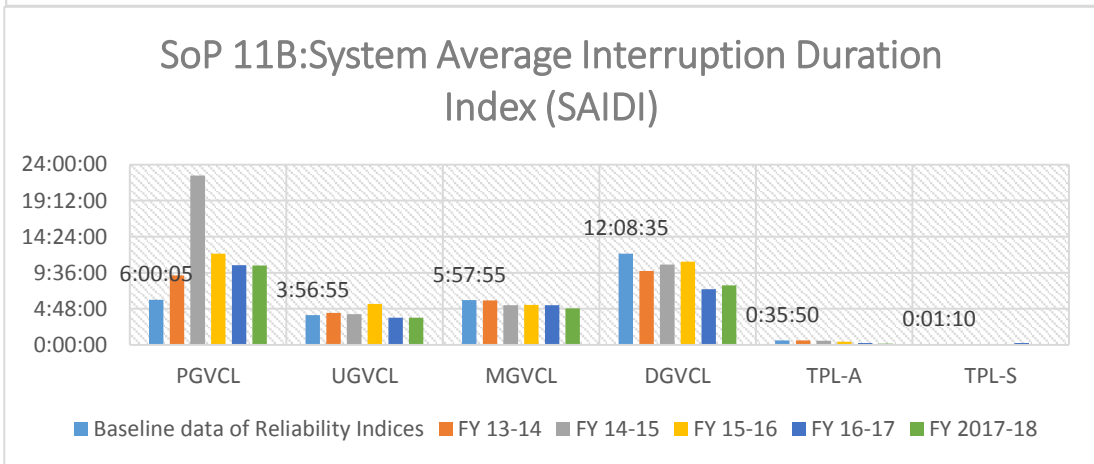
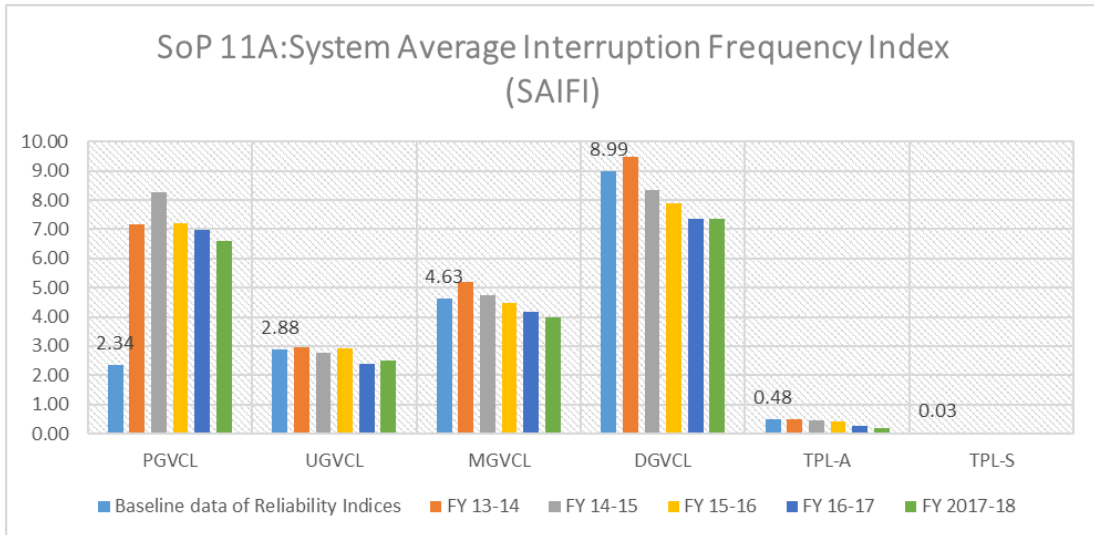
During FY 2017-18 the Failure rate of transformer (in %) was increased in PGVCL, UGVCL, DGVCL as compared to FY 2016-17.

RELIABILITY OF THE SYSTEM

SoP0011A: System Average Interruption Frequency Index (SAIFI)

SoP0011B: System Average Interruption Duration Index (SAIDI)

SoP0011C: Momentary Average Interruption Frequency Index (MAIFI)



SAIFI is higher than base line data in case of PGVCL, but it is reduced in FY 2017-18.
 SAIDI is higher than base line data in case of PGVCL, but it is reduced in FY 2017-18.
 MAIFI all distribution licensees are able to maintain it below base line data.

SoP0013: Meter faults

DISCOM	Year	Nos. of faulty meters at the start of the Qtr/Year (1)	Nos. of faulty meters added during the quarter/year (2)	Total no. of defective Meters/faulty Meters (3)= (2)+(1)	Nos. of faulty meters repaired and replaced (4)	Nos. of faulty meters pending at the end of the quarter/Year (5)= (3)-(4)
PGVCL	1-Phase	38521	20969	59490	30382	29108
	3-Phase	27386	11549	38935	14095	24840
	Annual	65907	32518	98425	44477	53948
UGVCL	1-Phase	1405	77968	79373	75372	4001
	3-Phase	2324	21959	24283	21183	3100
	Annual	3729	99927	103656	96555	7101
MGVCL	1-Phase	1470	86019	87489	87279	210
	3-Phase	0	10937	10937	10937	0
	Annual	1470	96956	98426	98216	210
DGVCL	1-Phase	32064	86472	118536	85673	32863
	3-Phase	7500	19789	27289	17113	10176
	Annual	39564	106261	145825	102786	43039
TPL-A	1-Phase	0	30575	30575	30575	0
	3-Phase	0	5340	5340	5340	0
	Annual	0	35915	35915	35915	0
TPL-S	1-Phase	27	10268	10295	10285	10
	3-Phase	6	3127	3133	3132	1
	Annual	33	13395	13428	13417	11

Nos. of faulty meters pending at the end of the quarter/Year more at PGVCL and DGVCL as compared to MGVCL and UGVCL.

SoP0015:Release of New Connection Status

SoP 015 Release of New Connection Status						
FY 2017-18	Total Nos. of consumers connected at the beginning of Half Year/Year	Pending at the Beginning of the Half Year/Year	New Applications received during the Half Year/Year	No. of connections released during the Half Year/Year	No. of applications pending at the end of Half Year/Year	Total no. of consumers connected at the end of Half Year/Year
PGVCL	4896808	49015	166456	185369	49015	5082177
UGVCL	3307434	40011	85981	86427	39338	3393388
MGVCL	2984771	1752	59283	53354	15760	3038953
DGVCL	2988183	50443	112104	117646	44901	3105829
Total Discoms	14177196	141221	423824	442796	149014	14620347
TPL-A	1850608	854	63585	57504	1104	1898659
TPL-S	598996	7	12763	12436	4	606120

